

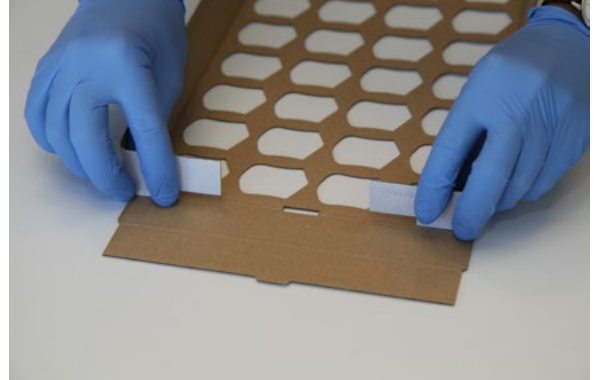
# Paper Tray Folding

1



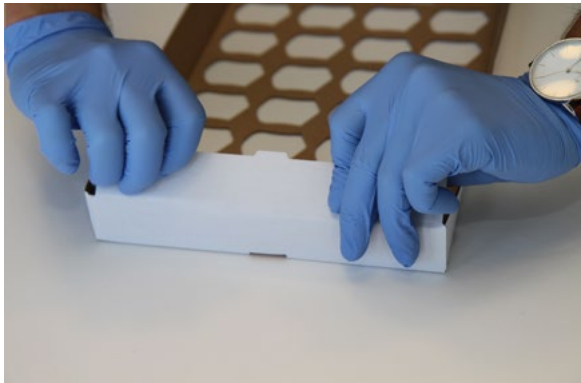
Fold the side flaps inwards at the perforation on both sides towards the brown cardboard side.

2



At the back fold the rectangular supports inwards.

3



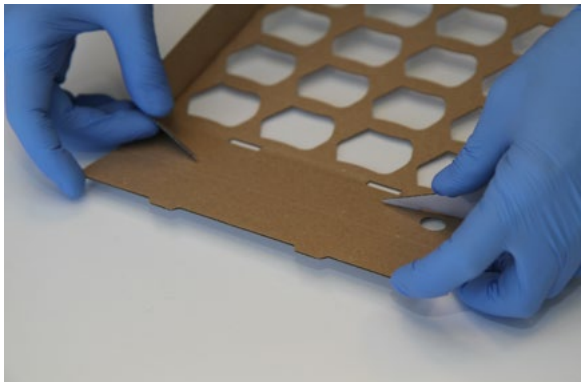
Fold in the back.

4



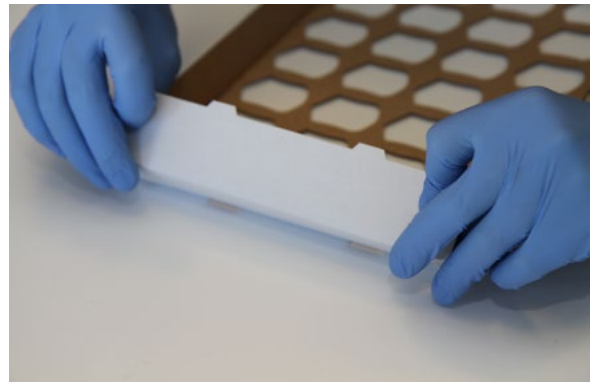
Insert the tab into the recess provided.

5



At the front, fold the triangular supports inwards.

6



Fold in the front side and insert the two tabs into the device. See above. Done!